

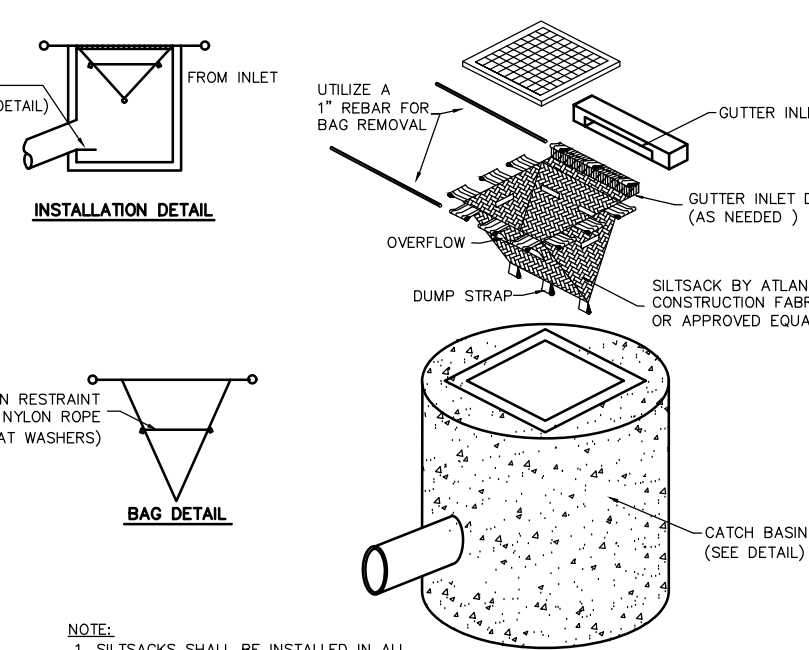
LEGEND:

N/F	NOW OR FORMERLY
OH	OVERHEAD WIRES
●	TREE
—	TREE LINE
UP	UTILITY POLE
GG•	GAS GATE
G	GAS SERVICE (BURIED)
WG•	WATER GATE
W	WATER SERVICE (BURIED)
DMH	DRAIN MANHOLE
D	SUB-SURFACE DRAIN LINE
---	EXISTING CONTOUR
---	EXISTING CONTOUR
☆	LIGHTPOLE
△	WETLAND FLAG
99X9	SPOT ELEVATION
○○○○	STONE WALL
—	EDGE OF PAVEMENT

UTILITY NOTE:

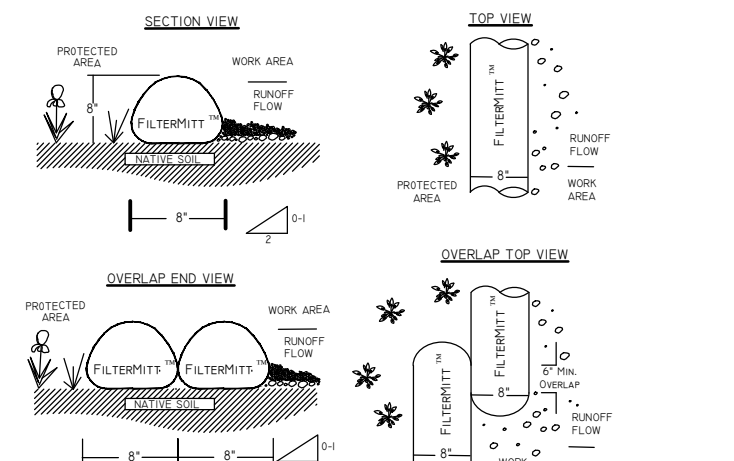
1: ALL UNDERGROUND UTILITIES SHOWN HERE WERE COMPILED ACCORDING TO AVAILABLE RECORD PLANS FROM VARIOUS UTILITY COMPANIES AND PUBLIC AGENCIES AND ARE APPROXIMATE ONLY. ACTUAL LOCATIONS MUST BE DETERMINED IN THE FIELD BEFORE DESIGNING, EXCAVATING, BLASTING, INSTALLING, BACKFILLING, GRADING, PAVEMENT RESTORATION OR REPAIRING. ALL UTILITY COMPANIES, PUBLIC AND PRIVATE, MUST BE CONTACTED INCLUDING THOSE IN CONTROL OF UTILITIES NOT SHOWN ON THIS PLAN. SEE CHAPTER 370, ACTS OF 1963 MASS. WE ASSUME NO RESPONSIBILITY FOR DAMAGES INCURRED AS A RESULT OF UTILITIES OMITTED OR INACCURATELY SHOWN. BEFORE PLANNING FUTURE CONNECTIONS THE APPROPRIATE PUBLIC UTILITY ENGINEERING DEPARTMENT MUST BE CONSULTED. DIG SAFE TELEPHONE No. 1-888-344-7233.

2: CONTRACTOR TO SECURE VALID DIGSAFE NUMBER PRIOR TO REQUESTING CONSTRUCTION LAYOUT.



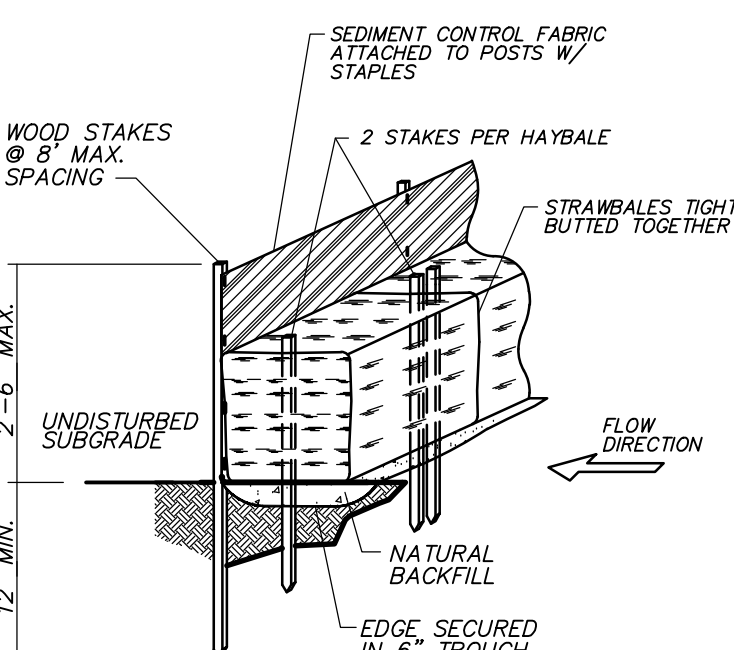
EROSION CONTROL SILT SACK DETAIL

DETAILED SPECIFICATIONS
8" SEDIMENT FILTERMITT™
SLOPES 2 TO 1 OR LESS
FIG. 1



ALTERNATIVE SILTATION BARRIER DETAIL

FOR FURTHER INFORMATION ABOUT PHASE II STORMWATER PRODUCTS, INC. CONTACT US AT:
P.O. Box 137 - WRENTHAM, MA 02093 - PH: (508) 386-7140 - FAX: (508) 386-0571
WWW.STORMWATERPRODUCTS.COM



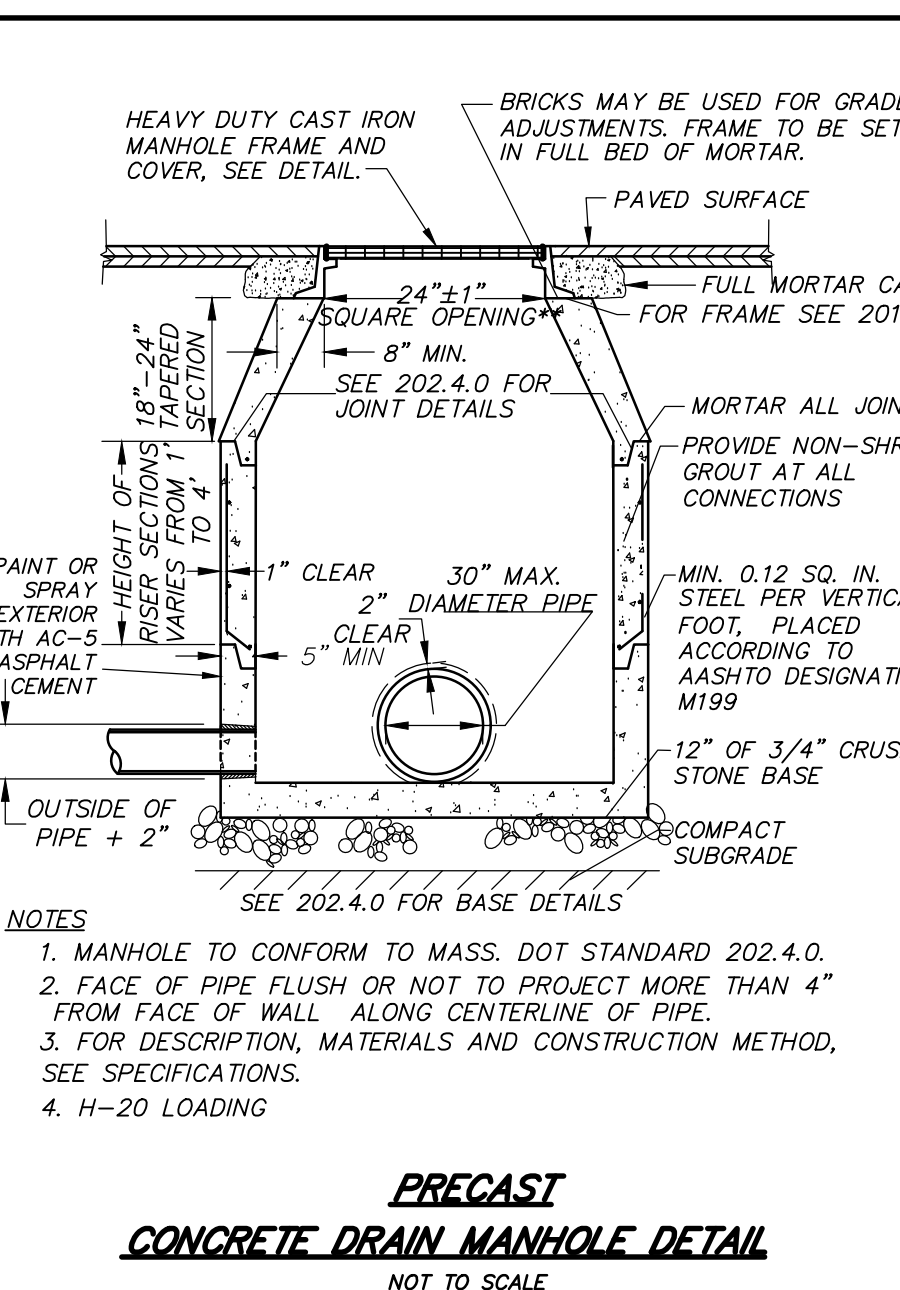
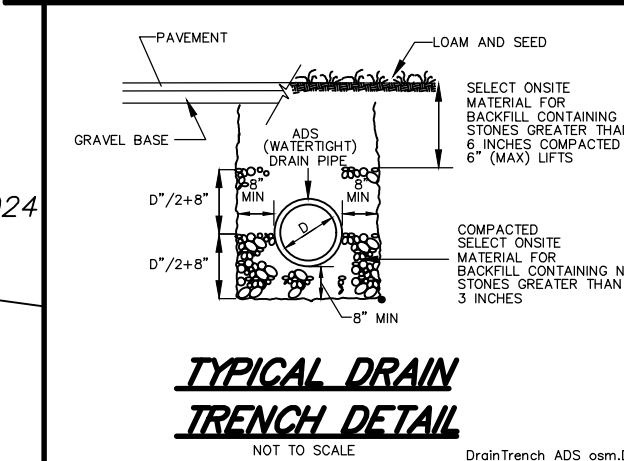
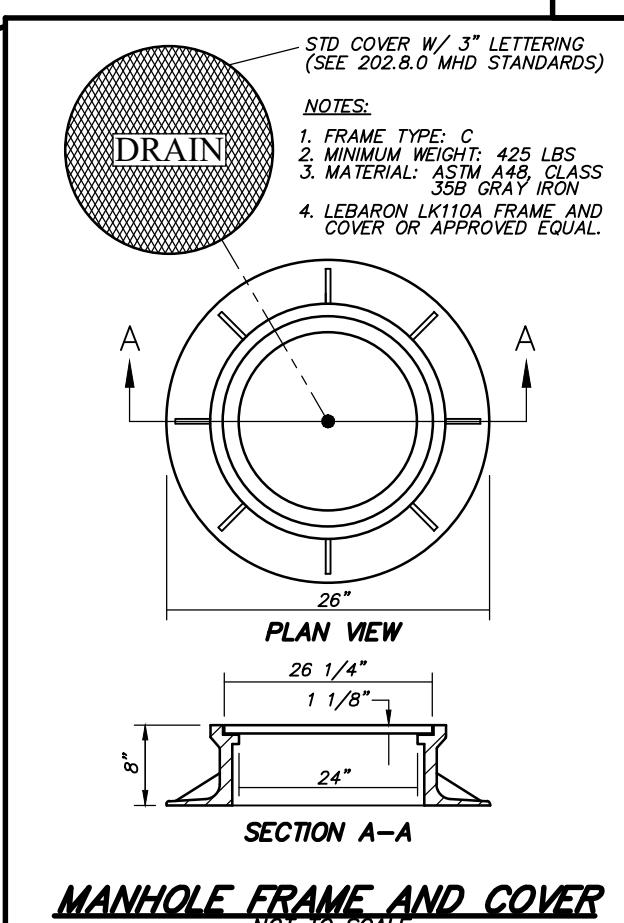
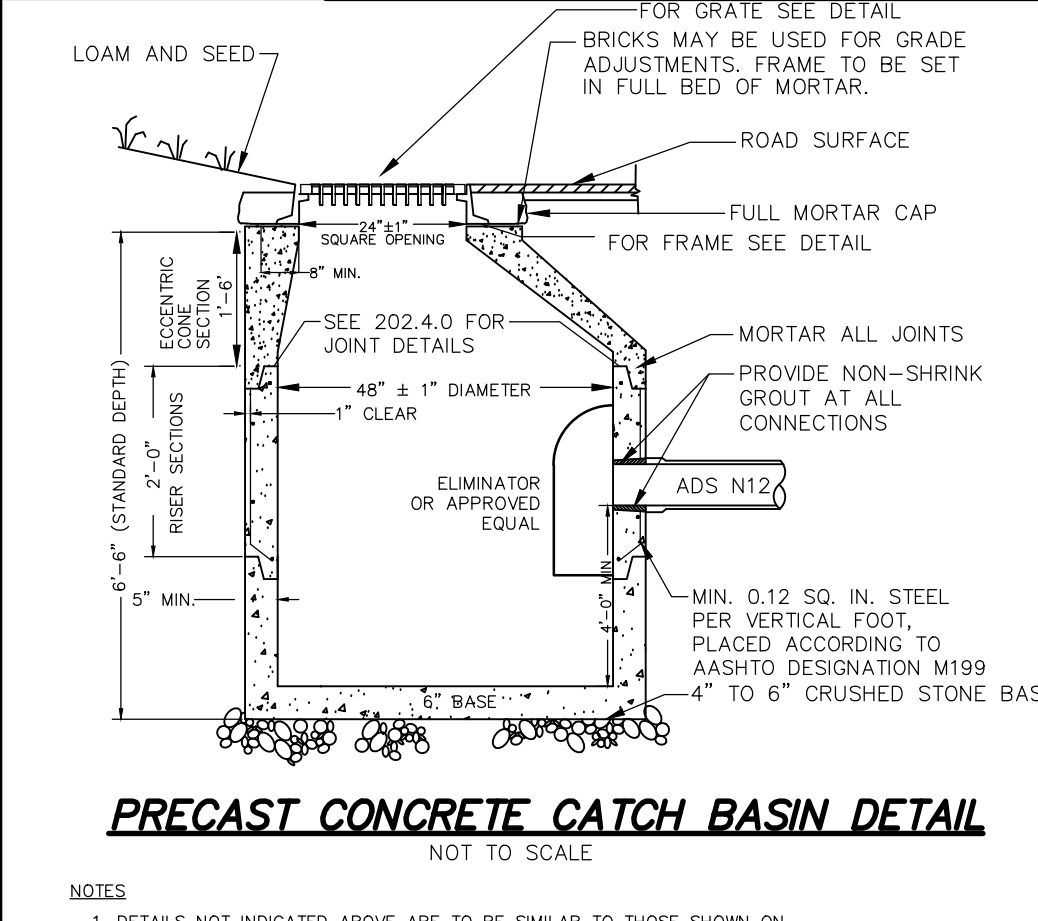
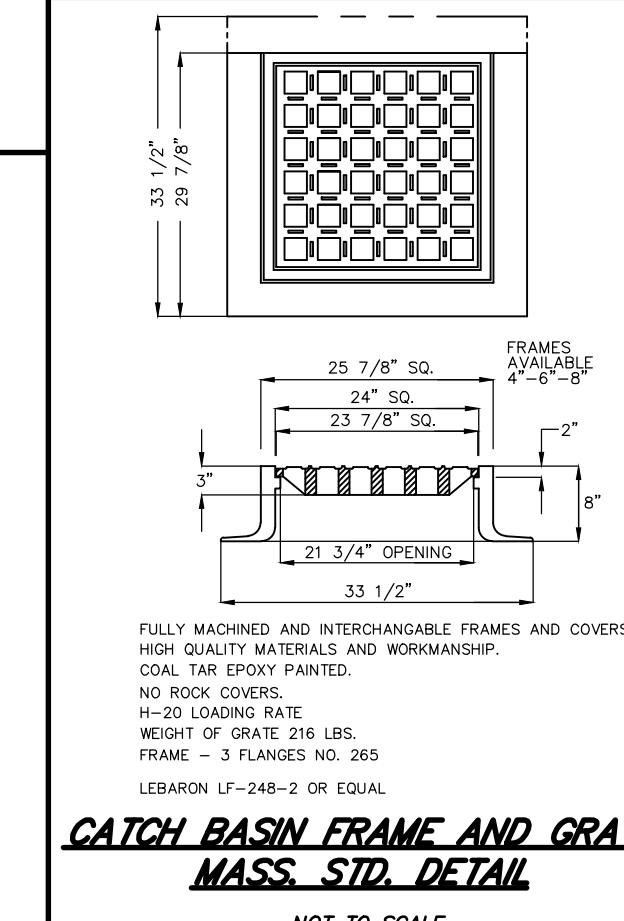
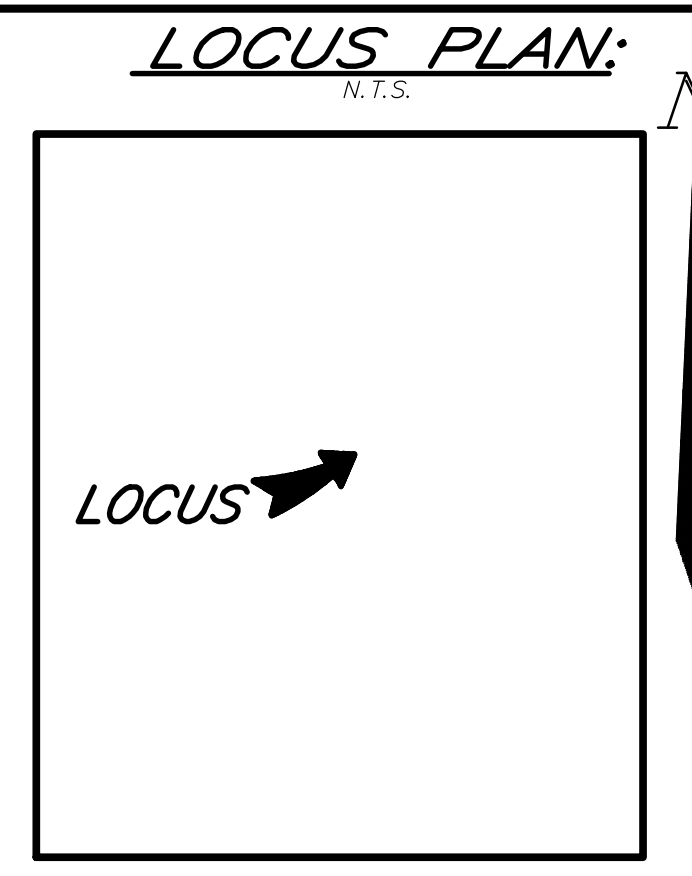
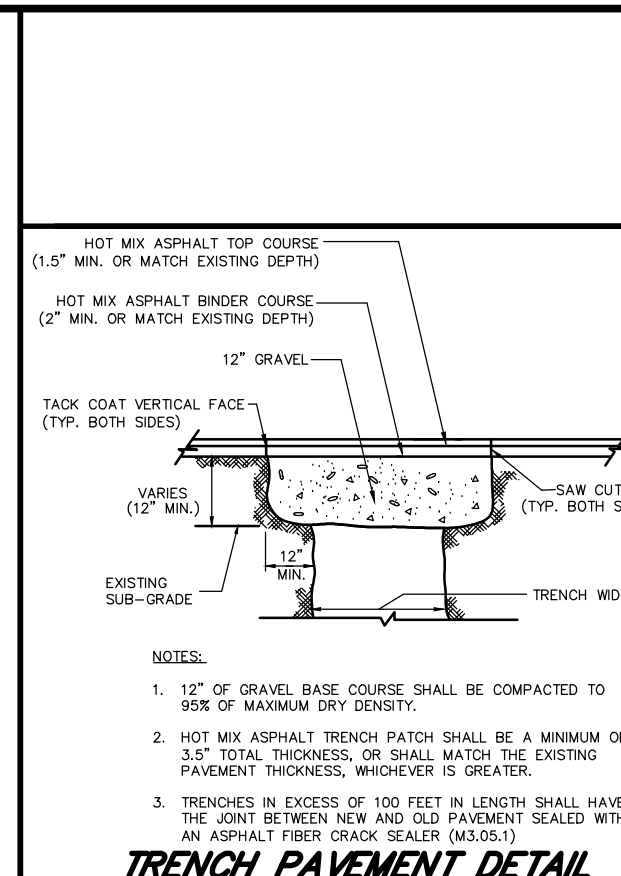
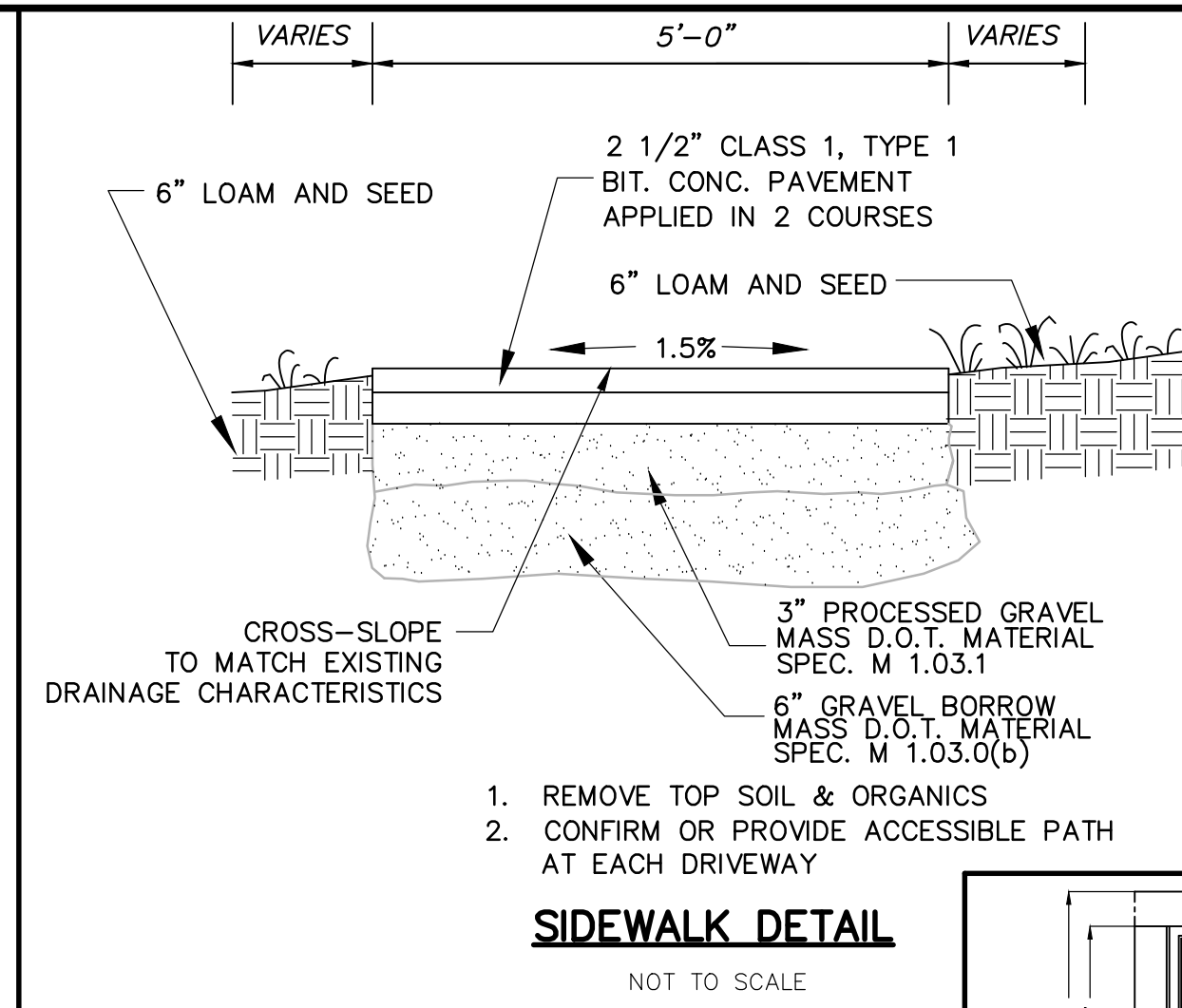
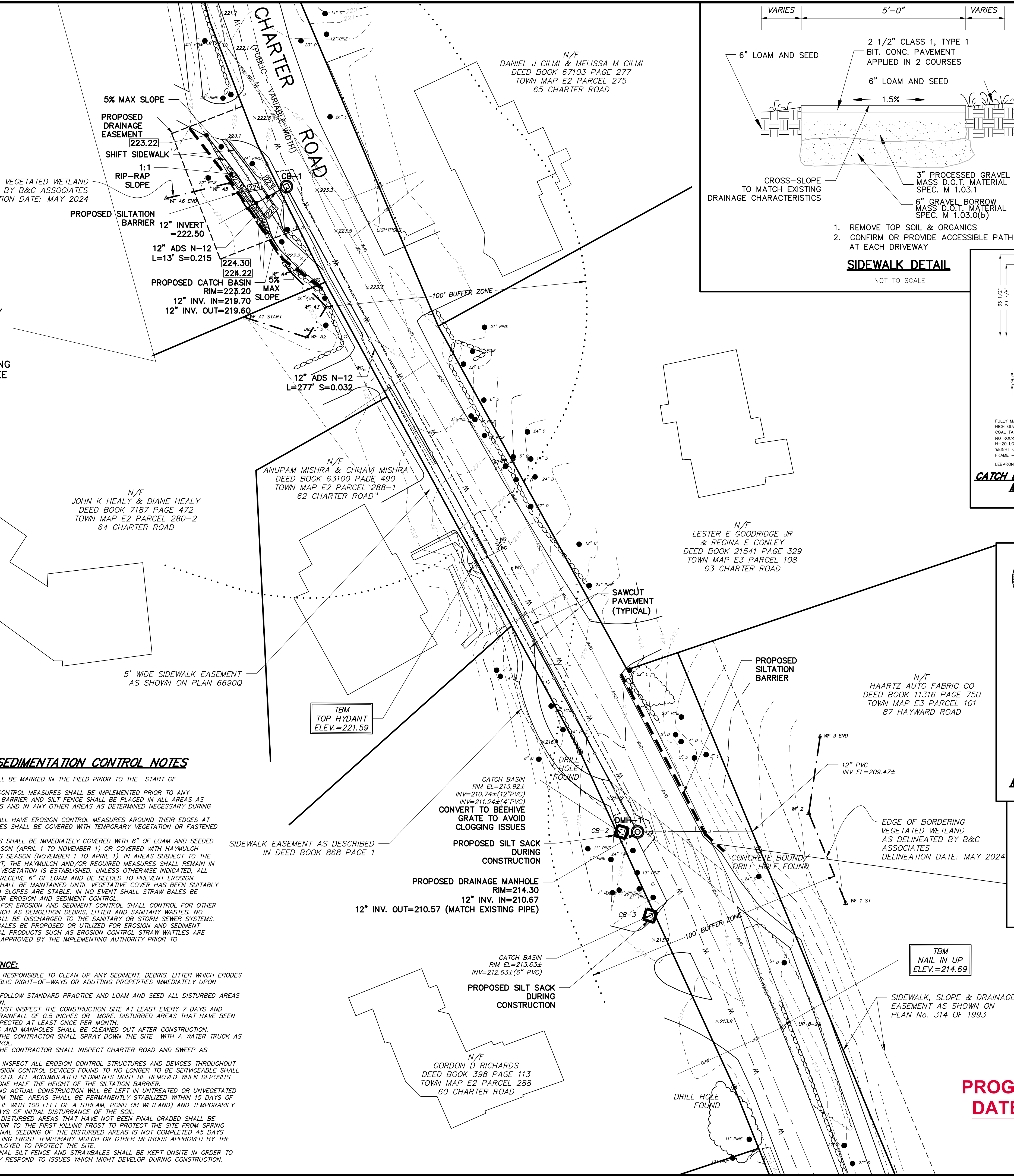
SILTATION BARRIER DETAIL

EROSION AND SEDIMENTATION CONTROL NOTES

- THE LIMITS OF WORK SHALL BE MARKED IN THE FIELD PRIOR TO THE START OF CONSTRUCTION.
- SEDIMENT AND EROSION CONTROL MEASURES SHALL BE IMPLEMENTED PRIOR TO ANY CONSTRUCTION. SILTATION BARRIER AND SILT FENCE SHALL BE PLACED IN ALL AREAS AS SHOWN ON ALL THE PLANS AND IN ANY OTHER AREAS AS DETERMINED NECESSARY DURING CONSTRUCTION.
- ALL SOIL STOCKPILES SHALL HAVE EROSION CONTROL MEASURES AROUND THEIR EDGES AT ALL TIMES. SOIL STOCKPILES SHALL BE COVERED WITH TEMPORARY VEGETATION OR FASTENED TAUPALUIN SHEETS.
- ALL CUT AND FILL SLOPES SHALL BE IMMEDIATELY COVERED WITH 6" OF LOAM AND SEED DURING THE GROWING SEASON (APRIL 1 TO NOVEMBER 1) OR COVERED WITH HAYMULCH DURING THE NON-GROWING SEASON (NOVEMBER 1 TO APRIL 1). IN AREAS SUBJECT TO THE WETLANDS PROTECTION ACT, THE HAYMULCH AND/OR REQUIRED MEASURES SHALL REMAIN IN PLACE UNTIL PERMANENT VEGETATION IS ESTABLISHED. UNLESS OTHERWISE INDICATED, ALL DISTURBED AREAS SHALL RECEIVE 6" OF LOAM AND BE SEED TO PREVENT EROSION.
- THE SILTATION BARRIER SHALL BE MAINTAINED UNTIL VEGETATIVE COVER HAS BEEN SUITABLY ESTABLISHED AND GRADED SLOPES ARE STABLE. IN NO EVENT SHALL STRAW BALES BE PROPOSED OR UTILIZED FOR EROSION AND SEDIMENT CONTROL.
- THE PARTY RESPONSIBLE FOR EROSION AND SEDIMENT CONTROL SHALL CONTROL FOR OTHER CONSTRUCTION WASTES SUCH AS DEMOLITION DEBRIS, LITTER AND SANITARY WASTES. NO CONSTRUCTION WASTE SHALL BE DISCHARGED TO THE SANITARY OR STORM SEWER SYSTEMS.
- IN NO EVENT SHALL HAYBALES BE PROPOSED OR UTILIZED FOR EROSION AND SEDIMENT CONTROL. APPROVED EQUAL PRODUCTS SUCH AS EROSION CONTROL STRAW WATTLES ARE REQUIRED AND SHALL BE APPROVED BY THE IMPLEMENTING AUTHORITY PRIOR TO INSTALLATION.

INSPECTION/MAINTENANCE:

- THE SITE CONTRACTOR IS RESPONSIBLE TO CLEAN UP ANY SEDIMENT, DEBRIS, LITTER WHICH ERODES FROM THE SITE INTO PUBLIC RIGHT-OF-WAYS OR ABUTTING PROPERTIES IMMEDIATELY UPON DISCOVERY.
- THE CONTRACTOR SHALL FOLLOW STANDARD PRACTICE AND LOAM AND SEED ALL DISTURBED AREAS FOLLOWING CONSTRUCTION.
- OPERATOR PERSONNEL MUST INSPECT THE CONSTRUCTION SITE AT LEAST EVERY 7 DAYS AND WITHIN 24 HOURS OF A RAINFALL OF 0.5 INCHES OR MORE. DISTURBED AREAS THAT HAVE BEEN STABILIZED MUST BE INSPECTED AT LEAST ONCE PER MONTH.
- ALL CATCH BASIN SUMPS AND MANHOLES SHALL BE CLEANED OUT AFTER CONSTRUCTION.
- DURING CONSTRUCTION, THE CONTRACTOR SHALL SPRAY DOWN THE SITE WITH A WATER TRUCK AS NEEDED FOR DUST CONTROL.
- DURING CONSTRUCTION THE CONTRACTOR SHALL INSPECT CHARTER ROAD AND SWEEP AS NECESSARY.
- THE CONTRACTOR SHALL INSPECT ALL EROSION CONTROL STRUCTURES AND DEVICES THROUGHOUT CONSTRUCTION. ANY EROSION CONTROL DEVICES FOUND TO NO LONGER TO BE SERVICEABLE SHALL BE REMOVED AND REPLACED. ALL ACCUMULATED SEDIMENTS MUST BE REMOVED WHEN DEPOSITS REACH NO MORE THAN ONE HALF THE HEIGHT OF THE SILTATION BARRIER.
- THOSE AREAS UNDERGOING ACTUAL CONSTRUCTION WILL BE LEFT IN UNTREATED OR UNVEGETATED CONDITION FOR A MINIMUM TIME. AREAS SHALL BE PERMANENTLY STABILIZED WITHIN 15 DAYS OF FINAL GRADING (7 DAYS IF WITH 100 FEET OF A STREAM, POND OR WETLAND) AND TEMPORARILY STABILIZED WITHIN 30 DAYS OF INITIAL DISTURBANCE OF THE SOIL.
- TEMPORARY SEEDING OF DISTURBED AREAS THAT HAVE NOT BEEN FINAL GRADED SHALL BE COMPLETED 45 DAYS PRIOR TO THE FIRST KILLING FROST TO PROTECT THE SITE FROM SPRING RUNOFF PROBLEMS. IF FINAL SEEDING OF THE DISTURBED AREAS IS NOT COMPLETED 45 DAYS PRIOR TO THE FIRST KILLING FROST TEMPORARY MULCH OR OTHER METHODS APPROVED BY THE ENGINEER SHALL BE EMPLOYED TO PROTECT THE SITE.
- A STOCKPILE OF ADDITIONAL SILT FENCE AND STRAWBALES SHALL BE KEPT ONSITE IN ORDER TO BE ABLE TO IMMEDIATELY RESPOND TO ISSUES WHICH MIGHT DEVELOP DURING CONSTRUCTION.



DRAINAGE PLAN
IN
ACTON, MASSACHUSETTS
(MIDDLESEX COUNTY)

FOR: TOWN OF ACTON
SCALE: 1"=20' SEPTEMBER 4, 2024
REVISED: JANUARY 16, 2025

STAMSKI AND MCNARY, INC.
1000 MAIN STREET ACTON, MASSACHUSETTS
ENGINEERING - PLANNING - SURVEYING

0 10 20 40 60 80 FT

(7534.DRAINAGE.dwg) 64 & 68 Charter Road SM-7534

PROGRESS PRINT
DATE: 1/23/2025